

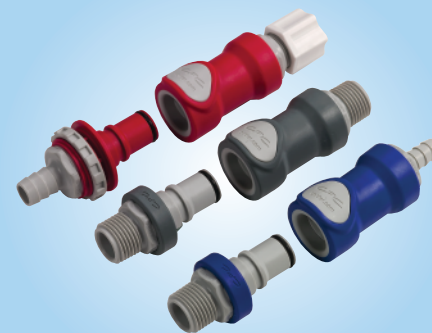
NS6 SERIES

Non-Spill, High Flow, Polypropylene Quick Disconnect Couplings

CPC®'s patent-pending NS6 Series quick disconnect couplings feature non-spill valves in a compact size, at a great price. They're ideal when even a few drops pose problems regarding safety, media cost or environmental regulations. These innovative couplings are lightweight, chemically-resistant and easy to use. They feature a thumb latch that provides one-handed operation and an audible "click" to let you know your connection is secure. The NS6 Series non-spill design virtually eliminates spills, minimizes downtime and enhances operator safety.

A larger version of the NS4, the NS6, can achieve more than 14 gpm. CPC also offers the award-winning ChemQuik™ CQN series of non-spill, high purity couplings, and has over 1000 off-the-shelf products in many designs and materials, with additional custom solutions, to meet your exact needs

Patent pending.



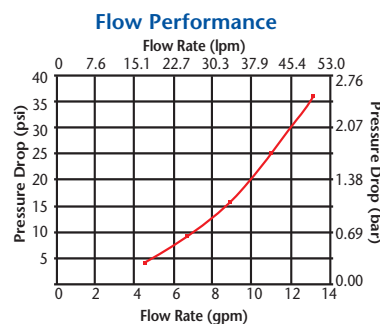
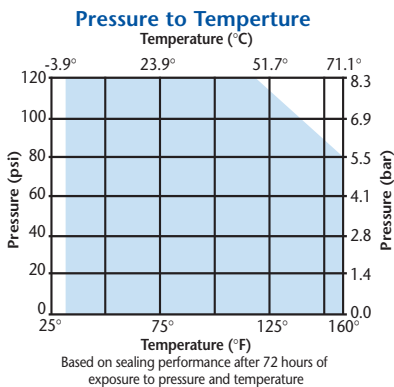
Applications:

- Ink handling
- Chemical delivery systems
- Electronic cooling
- Instrumentation
- Medical devices

FEATURES	BENEFITS
Non-spill shutoff valves	If even a few drops are a problem due to safety, spills, media cost or environmental regulations.
Color-coding	Instant visual differentiation of media lines.
Easy-to-use thumb latch	Allows you to make repeated, leak-free disconnects quickly and easily. The audible "click" indicates a secure connection and seal.
High-flow, small coupling size	Your equipment can utilize a smaller footprint and maintain the flow rate you need.
Plastic components	Allows you to have an economical, lightweight coupling with high-flow molded valves and superior ergonomics.
Chemical resistance	Glass-filled polypropylene with 316 stainless springs and EPDM or FKM o-ring seals resist a wide variety of media.
Appealing high-tech aesthetics	Adds to the value and acceptance of your final product.

NS6 Series Specifications

- Operating Pressure:** Vacuum to 120 psi, 8.3 bar (*see graph*)
- Operating Temperature:** 32° to 160°F / 0° to 71°C (*see graph*)
- Flow Capacity:** $C_v \sim 2.2$ (*see graph*)
- Spillage:** ~ 0.10 cc/disconnect at 30 psi
- Materials:**
- Main Components:** Glass-filled polypropylene
- O-ring Seals:** EPDM, FKM optional
- Optional Panel Mount Gasket:** EPDM or FKM
- Springs:** 316 Stainless Steel
- Lubricants:** Krytox® PFPE (*inert*)
- Panel Mount Nut:** Glass-filled polypropylene
- Mounting & Terminations:** In-line, pipe thread, panel mount insert
- Terminations:** (*see below*)



Visit us at
www.colder.com
or call toll-free
1-800-444-2474 for
a free catalog or your
local distributor.

WARNING: Due to the wide variety of possible fluid media and operating conditions, unintended consequences may result from the use of this product, all of which are beyond the control of CPC. It is the user's responsibility to carefully determine and test for compatibility for use with their application. All such risks shall be assumed by the buyer.

WARRANTY: All sales are subject to Colder Products Company's limited express warranty set forth in the CPC catalog. Contact your local distributor or CPC Customer Service for warranty provisions.

All measurements are in inches unless otherwise noted.

Contact the factory
for red or blue color-coded
NS6 couplings.

NS6 Series Couplings

Coupling Bodies	THREAD/TUBING SIZE	METRIC EQ	TERMINATION TYPE	PART NO.
Pipe Thread	1/2" NPT 1/2" BSPT	1/2" BSPT	Male NPT Thread Male BSPT Thread	NS6D10008 NS6D10008BSPT
In-Line				
<i>Compression</i>	1/2" OD	12.7mm OD	Compression	NS6D13008
<i>Hose Barb</i>	3/8" ID 1/2" ID	9.5mm ID 12.7mm ID	Hose Barb Hose Barb	NS6D17006 NS6D17008
Coupling Inserts				
Pipe Thread	1/2" NPT 1/2" BSPT		Male NPT Thread Male BSPT Thread	NS6D24008 NS6D24008BSPT
In-Line				
<i>Compression</i>	1/2" OD	12.7mm OD	Compression	NS6D20008
<i>Hose Barb</i>	3/8" ID 1/2" ID	9.5mm ID 12.7mm ID	Hose Barb Hose Barb	NS6D22006 NS6D22008
Panel Mount				
<i>Compression</i>	1/2" OD	12.7mm OD	Compression	NS6D40008
<i>Hose Barb</i>	3/8" ID 1/2" ID	9.5mm ID 12.7mm ID	Hose Barb Hose Barb	NS6D42006 NS6D42008
	Panel Hole 1-1/4"			
Accessories			MATERIAL	PART NO.
<i>Panel Mount Gasket</i>	For sealing panel mount inserts above		EPDM FKM	1884300 1889600



Colder Products Company
1001 Westgate Drive
St. Paul, Minnesota 55114
U.S.A.
Phone: 651-645-0091
Fax: 651-645-5404
Toll Free: 1-800-444-2474
info@colder.com
www.colder.com

Colder Products Company GmbH
Schmalweg 50
D-55252 Mainz-Kastel
Germany
Phone: +49-6134-2878-0
Fax: +49-6134-287828
Toll Free: 00800 600 50000
cpcgmbh@colder.com
www.colder.com

Colder Products Company Asia
11A, Vista Court
La Vista, Discovery Bay
Hong Kong
Phone: 852-9436-5986
Fax: 852-2987-2509
asiapacific@colder.com
www.colder.com